

INTRODUCTION

LUXroll is designed to be quickly installed into any fixture length as a continuous run. This guide highlights the best installation practices advised by LUXTECH and provides some useful tips and tricks to help ensure a perfect installation and save you precious assembly time.

While LUXroll is equipped with ESD protection devices every 22 inches, it is important to take the proper ESD precautions when installing LUXroll.

REQUIRED TOOLS



Scissors



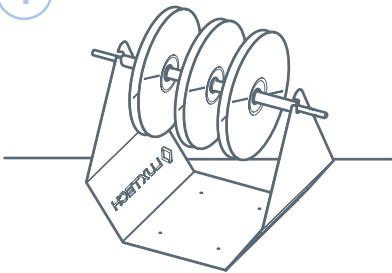
Benchtop
Ruler



ESD Strap

SETUP

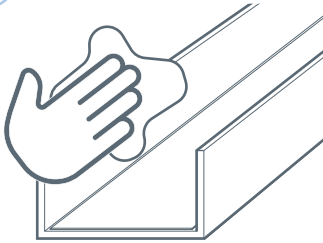
1



Use LUXroll Dispensor

Utilize LUXroll on an assembly table with our LUXroll dispenser.

2



Clean Fixture

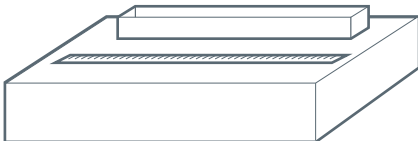
Make sure the gear tray is dry and clear of residue or debris. We recommend using a dry cloth for dust or isopropyl alcohol for grease or adhesive residue.



Pro-Tip: Because LUXroll is a continuous reel (44' or 198'), it's recommended to track inventory by the inch for optimal inventory management.

MEASURING & CUTTING (Option A - Measure, Cut, Apply)

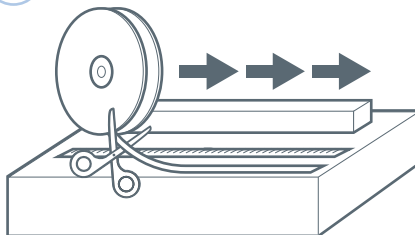
3 a



Measure LUXroll

LUXroll CC & TW is cuttable every 1/2" on the dash mark. LUXroll RGB & RGBW have dash marks every 2". Use a measuring tape on the workbench to specify the needed length.

4 a

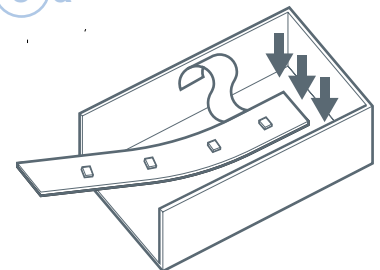


Cut LUXroll

Ensure the free end of LUXroll is secure for accurate measurement.

Pro-Tip: Pull gently to prevent product from unraveling from the dispenser.

5 a

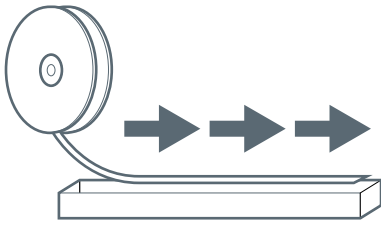


Apply LUXroll

Peel back the first 1" of the adhesive liner and attach LUXroll to the end of the fixture, ensuring it's centered and square to the fixture.

MEASURING & CUTTING (Option B - Roll, Apply, Cut)

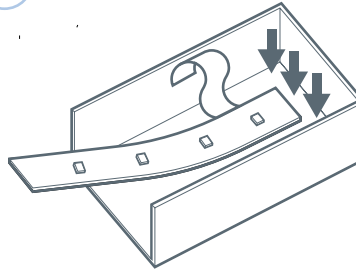
3 b



Unreel LUXroll

Pro-Tip: Pull gently to prevent product from unraveling from the dispenser. If the end of reel is reached, use the remaining length and fill the rest of the run from a new reel, wiring the 2 sections together.

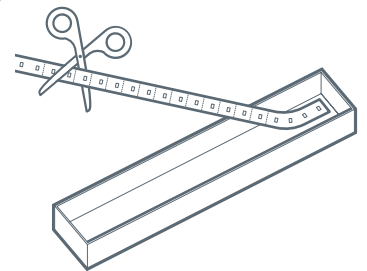
4 b



Attach LUXroll

Peel back the first 1" of the adhesive liner and attach LUXroll to the end of the fixture.

5 b

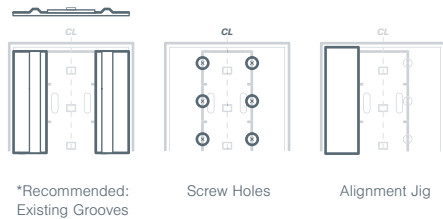


Cut LUXroll

Cut the product at the appropriate dash mark with scissors or similar cutting tool.

APPLYING

6



*Recommended:
Existing Grooves

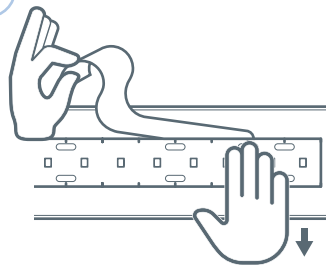
Screw Holes

Alignment Jig

Align LUXroll

In order to align LUXroll along the entire fixture length, use screw holes as visual indicators, utilize an alignment jig, or use existing grooves as a guide.

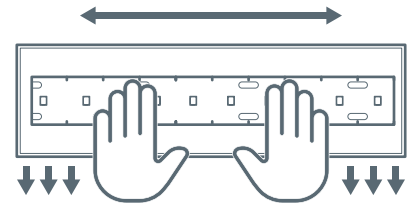
7



Gently Apply LUXroll

With the first 1" of LUXroll already adhered, continue to remove the adhesive liner and adhere LUXroll by gently pressing down as you progress to the end of the fixture. By pressing gently, you can pull up and realign as needed.

8

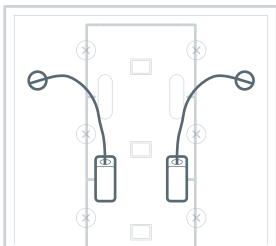


Firmly Apply LUXroll

Once the full length of LUXroll is adhered to the fixture, firmly press to ensure full-contact adhesion - the tape is pressure sensitive.
Pro-Tip: We recommend using a 1" wide soft-foam roller for best adhesion results.

WIRING

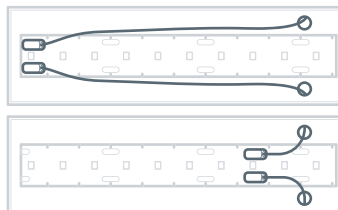
9



Wire LUXroll

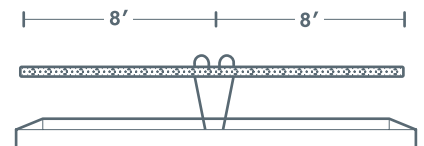
LUXroll CC & TW is cuttable every 1/2" on the dash mark. LUXroll RGB & RGBW have dash marks every 2". Use a measuring tape on the workbench to specify the needed length.

10



Use Wire Whip if Needed

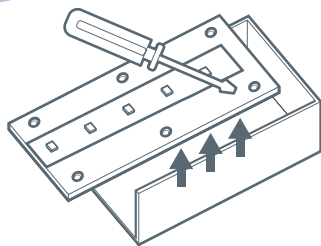
Depending on where the cut is made, the connector locations may vary build to build (by up to 18"). We recommend using a wire whip that is long enough to reach varying connector locations.



Pro-Tip: We recommend a maximum run length of 8' for optimal brightness uniformity. If a longer run is required, it's best practice to power from the center of the run.

FIELD SERVICABILITY (Option A - Gear Tray Replacement):

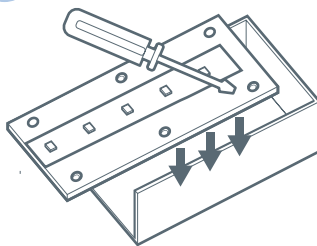
11a



Remove Tray

The gear tray with LUXroll attached can be removed and replaced entirely. First, remove wires from LUXroll. Then unscrew the entire gear tray using a screwdriver.

12a

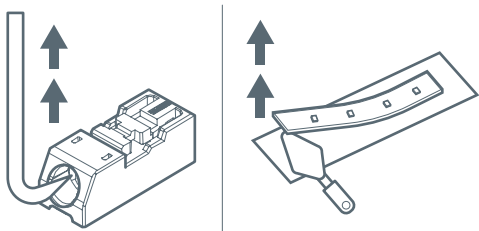


Replace Tray

Replace the old gear tray with a new gear tray that has a new LUXroll strip already installed.

FIELD SERVICABILITY (Option B - Module Replacement):

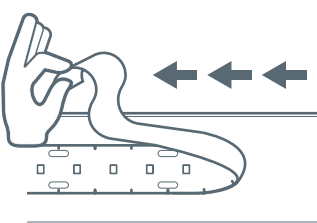
11b



Peel LUXroll

If replacing the module, first, unwire LUXroll. Peel back the tape by inserting a pick into the connector and pull up OR use a blade to lift the edge of the tape.

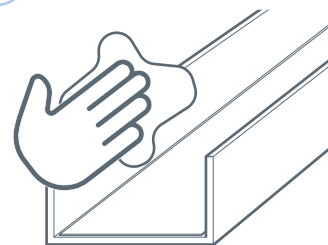
12b



Remove LUXroll

Once there is enough tape free to grab, pull the remainder of LUXroll from gear tray.

13b



Clean Fixture

If there is any adhesive residue, use a rag and solvent such as isopropyl alcohol to remove. Once the surface is clean, reinstall a new piece of LUXroll, as described previously.

CONTACT US

For assistance, please reach out at sales@luxtech.com